

Dual Band Access Point

Model : Huawei AP5010DN-AGN

AP5010 wireless Access Point (AP) series offers superior value and flexibility with 2.4 GHz and 5 GHz radios, IEEE 802.11a/b/g/n standards compliance, and Fit AP or Fat AP operation. It supports Multiple-Input Multiple-Output (MIMO) technology, provides radio coverage in a larger area, and offers services simultaneously on 2.4 GHz and 5 GHz frequency bands to connect more users.

The AP5010 provides comprehensive service support capabilities and features proven reliability, high security, simple network deployment, automatic AC discovery and configuration, and real-time management and maintenance for indoor environments.



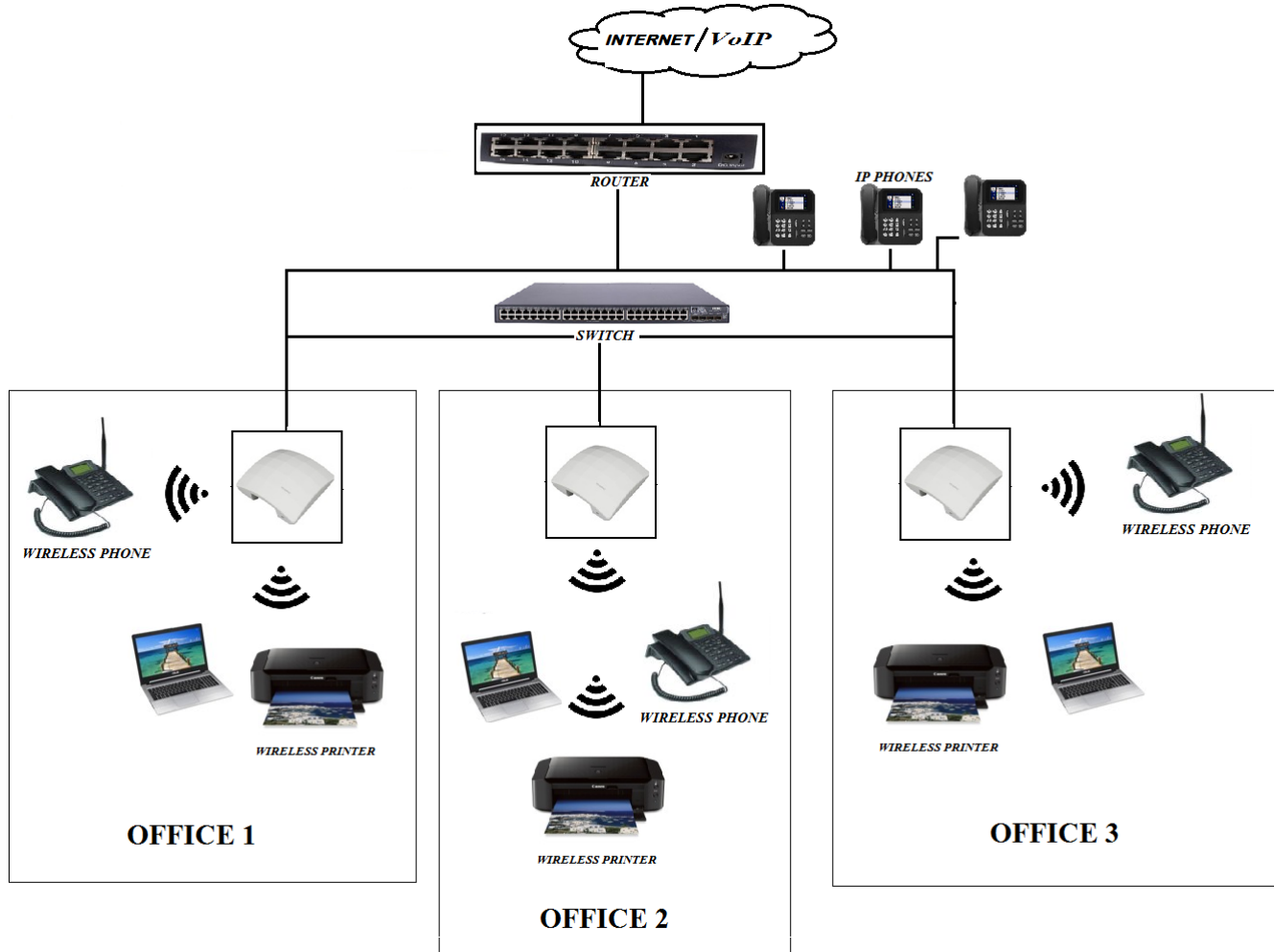
Features

- 2 x 2 MIMO technology, with built-in antennas and a maximum rate of 300 Mbit/s for each radio
- Integrated Fit AP and Fat AP functions
- Value-added services, such as spectrum analysis and locating service
- Wireless Distribution System (WDS)/Mesh networking
- Wireless Intrusion Detection System (WIDS)/Wireless Intrusion Prevention System (WIPS)
- High Density Boost
- Fast roaming without service interruption
- IPv6 support
- PoE power supply in compliance with IEEE 802.3af/at, simplifying installation
- Dual-band AP5010DN-AGN: works on both 2.4 GHz and 5 GHz frequency bands

Applications

Recommended for smaller locations with simple building structures, high user density, and high capacity demands, such as enterprise offices, campuses, hospitals, large shopping malls, and exhibition centers.

Application Diagram



Technical Specifications

Parameters	Specifications
Power input	<ul style="list-style-type: none"> 12V DC \pm 10% PoE power supply: -48V DC (in compliance with IEEE 802.3af/at)
Maximum power consumption	9.5W
Operating temperature	-10°C to +50°C
Storage temperature	-40°C to +70°C
Operating humidity	5% to 95% (non-condensing)
System memory	<ul style="list-style-type: none"> 128 MB DDR2, 32 MB flash memory
Waterproof and dustproof grade	IP31

Antenna type	Built-in antennas
Antenna gain	2.4 GHz: 4 dBi, 5 GHz: 5 dBi
Maximum users	≤ 128
Maximum TX power	17 dBm for each radio port
Power increment	1 dBm
WLAN features	<ul style="list-style-type: none"> • Compliance with IEEE 802.11a/b/g/n, maximum rate of 600 Mbit/s • Service Set Identifier (SSID) hiding, Signal Sustain Technology (SST) • Unscheduled Automatic Power Save Delivery (U-APSD) • Control and Provisioning of Wireless Access Points (CAPWAP) in Fit AP mode • Automatic access in Fit AP mode • WDS in Fit AP mode, Mesh in Fit AP mode • Maximum Ratio Combining (MRC), Maximum Likelihood Detection (MLD) • Data unit aggregation, including A-MPDU (Tx/Rx) and A-MSDU (Rx only) • 802.11 Dynamic Frequency Selection (DFS) for the AP5010DN-AGN • Short Guard Interval (GI) • Priority mapping and packet scheduling based on a Wi-Fi Multimedia profile
Network features	<ul style="list-style-type: none"> • Auto-negotiation of the rate and duplex mode; automatic switchover between the Media Dependent Interface (MDI) and Media Dependent Interface Crossover (MDI-X) SSID-based VLAN assignment • VLAN trunk on uplink Ethernet ports • 4,094 VLAN IDs (1 to 4,094) and a maximum of 16 virtual APs for each radio • DHCP client, obtaining IP addresses through DHCP • Access Control Lists (ACLs), Link Layer Discovery Protocol (LLDP) • Service holding upon CAPWAP link disconnection in Fit AP mode • Unified authentication on the AC in Fit AP mode • AC dual-link backup in Fit AP mode
Security features	<ul style="list-style-type: none"> • Open system authentication • WEP authentication/encryption • WPA/WPA2-PSK authentication and encryption • WPA/WPA2-802.1x authentication and encryption • WAPI authentication and encryption • WIDS including rogue AP and STA detection, attack detection, STA/AP black list and white list.
Spectrum analysis	Identifies interference sources such as baby monitors, Bluetooth devices, digital cordless phones (at 2.4 GHz frequency band only), wireless audio transmitters (at both the 2.4 GHz and 5 GHz frequency bands), wireless game controllers, and microwave Ovens.
Locating service	<ul style="list-style-type: none"> • Locates tags manufactured by Aero Scout or Ekahau. • Locates Wi-Fi terminals
Dimensions (W x D x H)	180 mm x 180 mm x 50 mm
Weight	0.4 kg

If you need the Huawei AP5010DN-AGN Access Point, welcome to contact us.

E-mail : sales@4gltemall.com, Website : www.4gltemall.com